

gloves

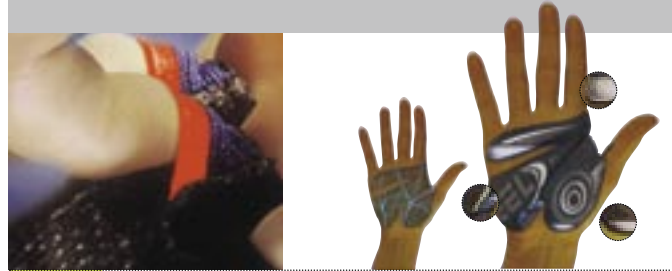


The German company Roeckl was founded in 1839 and is now in the 6th generation of family ownership. The company is specializing exclusively in the manufacture of sporting and fashion gloves. Through their history, Roeckl have a truly unique understanding of the compressive and vibrational stresses our hands have to endure while biking, and how gloves can alleviate these stresses.

Try Roeckl gloves – you will feel the difference!

Roeckl's ergonomic cut: Our performance tests showed that cyclists hands' are exposed to a high amount of vibrations and localised pressure points. The pressure applied to nerves in the hand can cause an unpleasant numbness of the hand or forearm and could lead to Carpel Tunnel syndrome.

Roeckl's ergonomic shape will prevent this through specially placed high density foam and gel cushions. Those cushions will also improve the position of the rider's hands while riding thus reducing fatigue.



Patented "Pull-off System"
Silicon pouches on the palm allow effortless removal of the gloves even from sweaty hands

ladies glove 035



- > Lycra Spandex Upper
- > Cotton Lycra thumb
- > Patented "PULL OFF" removal aid
- > Silicon Gel for impact and vibration absorption
- > Flex foam
- > **Sizes:** 6 & 7
- > **Colours:** red, black and white

Part no:
Black - 3102035000size
Red - 31020354400size
White - 31020351000size

men's glove 172



- > Tan Thru the back of the hand with the use of exclusive materials
- > Terry Towelling Thumb
- > SILICON Gel for impact and vibration absorption
- > Pull off system
- > Ergonomic Cut with comfort innovation
- > Non-Slip, Clarino/Silicon Coated Inner Palm
- > **Colour:** White/Grey
- > **Sizes:** 7, 8, 9 and 10

Part no: 3103 173 100 Size

men's glove 169



- > Micro Mesh / Spandex Upper Glove
- > Terry Towelling Thumb
- > SILICON Gel for impact and vibration absorption
- > Pull off system
- > Ergonomic Cut with comfort innovation
- > Non-Slip, Clarino / Silicon Coated Inner Palm
- > Black / Royal
- > **Sizes:** 8 9 10 and 11

Part no: 3103 169 000 Size

kid's glove 846



- > Lycra Upper Glove
- > Terry Towelling Thumb
- > Durable
- > **Sizes:** 4,5 & 6
- > **Colours:** Blue

Part no: 3105 846 550

men's glove 171



- > Micro Mesh/Spandex Upper Glove
- > Terry Towelling Thumb
- > Ergonomic cut and Comfort Innovation
- > Reflective Piping
- > Durable WET GRIP inner palm for good grip in even in wet conditions
- > Hard wearing and soft to wear
- > SILICON Gel for impact and vibration absorption
- > Pull off system
- > Blue
- > **Sizes:** 7.5, 8.5, 9.5 and 10.5

Part no: 3103 171 550 Size

winter 572



- > Upper Glove Fully Lined With Windstopper
- > Inner Glove Made Out Of Clarino Grip
- > Windproof But Fully Breathable
- > Adjustable Cuff with Velcro Closure
- > **Original W.L. Gore windproof material, breathable**
- > **Sizes:** 7-10
- > **Colours:** royal blue

Part No: 3103 572 550